

Mouse Monoclonal Antibody to

Topoisomerase 1

clone 23B11

Order No.: 0115-100/TOPO1-23B11

Size (µg) 100

Lot No.: 0115S



www.nanotools.de

orders & support:

email: info@nanotools.de

phone: +49-7641-455 670

fax: +49-7641-455 671

01/050307F

Isotype	Species Reactivity	Applications	Mol. Weight	Ref. Cell Line	Epitope	Immunogen
IgG1	human	WB	90 kDa	HepG2	aa 699 - 725	peptide conjugated to KLH

Background and Specificity:

DNA Topoisomerases catalyze strand breakage of DNA molecules. During DNA cleavage, a tyrosyl residue of the enzyme breaks the DNA strand by forming a covalent phosphotyrosine residue. Rejoining of the DNA strands occurs by a second transesterification reaction.

Mab TOPO1-23B11 specifically recognizes Topoisomerase 1 in Western blot applications.

Related Products

Purification: The antibody was purified from serum-free cell culture supernatant by subsequent thiophilic adsorption and size exclusion chromatography.

Formulation: lyophilized from 1 ml 2 x PBS / 0.09 % Na-azide / PEG and Sucrose.

Reconstitution: Reconstitute with 1 ml H₂O (15 min, RT).

Stability: For long-term storage, freeze lyophilizate upon arrival (-20°C). Upon reconstitution, aliquote and freeze in liquid nitrogen; reconstituted antibody can be stored frozen at -80°C up to 1 year. Thaw aliquots at 37°C. Thawed aliquots may be stored at 4°C up to 3 months.

Avoid repeated freeze / thaw cycles

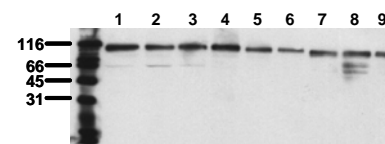
Positive Control: #0811: Cell lysate from untreated HepG2 cells

Immunoblotting: 0.5 µg/ml for HRPO/ECL detection
Recommended blocking buffer: Casein/Tween 20 based blocking and blot incubation buffer, e.g. nanoTools product #3031-500/CPPT or #3031-3000/CPPT.

Immunoprecipitation: ND

Immunocytochemistry: ND

ELISA: ND



Detection of endogenous Topoisomerase I
 Whole cell lysates of serum starved tumor cells (20.000 cells per lane) were applied to SDS-PAGE and transferred to PVDF membranes. Immunoblots were probed with mab 23B5 (0.5 µg/ml) for 1h at RT and developed by ECL (exp. time: 30 sec).
 lane 1: HeLa; lane 2: HepG2; lane 3: HEK-293; lane 4: SH-SY5Y; lane 5: MDCK; lane 6: PC12; lane 7: CMT-93; lane 8: Neuro 2A; lane 9: 3T3

All products are supplied for research and investigational use only. Not for use in humans or laboratory animals.