

Mouse Monoclonal Antibody to

shc (C-terminus)

clone 11F6

Order No.: 0157-100/shc-11F6

Size (µg) 100

Lot No.: 0157S



www.nanotools.de

orders & support:

email: info@nanotools.de

phone: +49-7641-455 670

fax: +49-7641-455 671

03/080507F

| Isotype | Species Reactivity | Applications | Mol. Weight | Ref.Cell Line | Epitope | Immunogen |
|---------|--------------------|--------------|--------------|---------------|------------|----------------------------------|
| IgG1 | human, mouse | WB, ICC, IHC | 46/52/66 kDa | 3T3 | C-terminus | peptide conjugated to hemocyanin |

Background and Specificity:

Mammalian cells can express three alternatively spliced isoforms of the shc adaptor protein: shc/p46, shc/p52 and shc/p66. shc/p66 contains a unique N-terminal protein domain. In addition to tyrosine phosphorylation of Tyr 239/240 and/or Tyr 317, shc/p66 is phosphorylated at serine 36, e.g. in response to EGF.

Serine phosphorylation of shc/p66 impairs its ability to bind to the activated EGF receptor thus inhibiting EGF receptor downstream signalling pathways.

Mab shc-11F6 specifically recognizes the C-terminus of shc.

Related Products

mab to shc (phospho-Tyr239/240)

#0093-100/shc-1E3

mab to shc (phospho-Tyr 317)

#0100-100/shc-15E11

mab to shc/p66 (N-terminus)

#0180-100/shc/p66-24E4

mab to shc/p66 (phospho-Ser 36)

#0094-100/shc/p66-6E10

| | |
|------------------------|--|
| Purification: | The antibody was purified from serum-free cell culture supernatant by subsequent thiophilic adsorption and size exclusion chromatography. |
| Formulation: | lyophilized from 1 ml PBS / 0.09 % Na-azide / PEG and Sucrose. |
| Reconstitution: | Reconstitute with 1 ml H ₂ O (15 min, RT). |
| Stability: | For long-term storage, freeze lyophilizate upon arrival (-20°C). Upon reconstitution, aliquote and freeze in liquid nitrogen; reconstituted antibody can be stored frozen at -80°C up to 1 year. Thaw aliquots at 37°C. Thawed aliquots may be stored at 4°C up to 3 months. |

Avoid repeated freeze / thaw cycles.

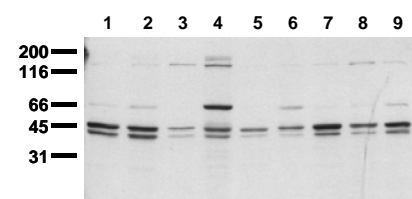
Positive Control: #0861: Cell lysate from untreated 3T3 cells

Immunoblotting: 1 µg/ml for HRPO/ECL detection
Recommended blocking buffer: Casein/Tween 20 based blocking and blot incubation buffer, e.g. nanoTools product #3031-500/CPPT or #3031-3000/CPPT.

Immunoprecipitation: ND

Immunocytochemistry: ND

ELISA: ND



Detection of endogenous shc

Whole cell lysates of serum starved tumor cells (ca. 20.000 cells per lane) were applied to SDS-PAGE and transferred to a PVDF membrane. The immunoblot was probed with mab shc-11F6 (0,5 µg/ ml) for 1h at RT and developed by ECL (exp. time: 30 sec).

lane 1: HeLa; lane 2: HepG2; lane 3: HEK293; lane 4: SH-SY5Y; lane 5: MDCK; lane 6: PC12; lane 7: CMT 93; lane 8: Neuro 2A; lane 9: 3T3

All products are supplied for research and investigational use only. Not for use in humans or laboratory animals.