

Mouse Monoclonal Antibody to

PKB/Akt (phospho-Ser 473)

clone 11E6

Order No.: 0108-100/PKB-11E6

Size (µg) 100

Lot No.: 0108S



www.nanotools.de

orders & support:

email: info@nanotools.de

phone: +49-7641-455 670

fax: +49-7641-455 671

03/080507F

Isotype	Species Reactivity	Applications	Mol. Weight	Ref.Cell Line	Epitope	Immunogen
IgG1	human, mouse, rat, dog	WB, ELISA, IHC, flow cytometry	60 kDa	HepG2	phosphoserine 473 P Q F pS Y S A	phosphopeptide conjugated to KLH

Background and Specificity:

The PKB (RAC/akt) protein kinases are a family of second messenger-regulated serine/threonine kinases. Three mammalian isoforms (alpha, beta, gamma) have been identified so far; the alpha-isoform being the cellular homologue of the v-akt oncogene. Stimulation of cells with growth factors leads to activation of PKB by a phosphoinositide-3-kinase dependent signal transduction pathway. Activated PKB is phosphorylated at serine 473 (mTOR/Rictor or DNA-PK) and threonine 308 (PDK1).

Mab PKB-11E6 specifically recognizes PKB phosphorylated at serine 473 in Western blot and ELISA applications.

Related Products

mab to PKB (C-terminus)
#0119-100/PKB-5C10

mab to PKB α (Akt-1)
#0144-100/PKBa-5G12

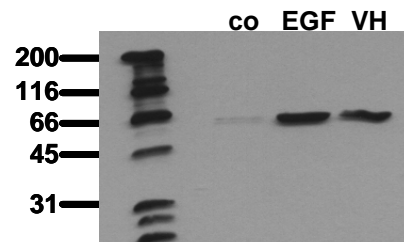
mab to PKB β (Akt-2)
#0179-100/PKBb-8B7

mab to PKB (dephospho-Ser 473)
#0049-100/PKB-11A11

mab to Raptor
#0255-100/Raptor-10E10

mab to Rictor
#0250-100/Rictor-1G11

Purification:	The antibody was purified from serum-free cell culture supernatant by subsequent thiophilic adsorption and size exclusion chromatography.
Formulation:	lyophilized from 1 ml 2 x PBS / 0.09 % Na-azide / PEG and Sucrose.
Reconstitution:	Reconstitute with 1 ml H ₂ O (15 min, RT).
Stability:	For long term storage, freeze lyophilizate upon arrival (-20°C): Aliquote and freeze in liquid nitrogen; reconstituted antibody can be stored frozen at -80°C up to 1 year. Thaw aliquots at 37°C. Thawed aliquots may be stored at 4°C up to 3 months. Avoid repeated freeze / thaw cycles.
Positive Control:	#0812: Cell lysate from pervanadate treated HepG2 cells.
Immunoblotting:	0.5 µg/ml for HRPO/ECL detection Recommended blocking buffer: Casein/Tween 20 based blocking and blot incubation buffer, e.g. nanoTools product #3031-500/CPPT or #3031-3000/CPPT.
Immunoprecipitation:	ND
Immunocytochemistry:	ND
ELISA:	use at 0.05 µg/ml



Phosphospecificity
Whole cell extracts of control (lane 1), EGF stimulated (lane 2) or pervanadate treated (lane 3) SKOV3 tumor cells were applied to SDS-PAGE (ca 20.000 cells per lane) and transferred to a PVDF membrane. The immunoblot was probed with mab PKB-11E6 (0.5 µg/ ml) for 1h at RT and developed by ECL (exp. time: 30 sec).

All products are supplied for research and investigational use only. Not for use in humans or laboratory animals.