

Mouse Monoclonal Antibody to

M-Cadherin (human)

clone 21G4

Order No.: 0124-100/MCAD-21G4

Size (µg) 100

Lot No.: 0124S



www.nanotools.de

orders & support:

email: info@nanotools.de

phone: +49-7641-455 670

fax: +49-7641-455 671

02/140307F

Isotype	Species	Reactivity	Applications	Mol. Weight	Ref. Cell Line	Epitope	Immunogen
IgG1	human		WB, ELISA, ICC	130 kDa	none	extracellular domain	recombinant extracellular domain of human M-cadherin

Background and Specificity:

Cadherins are a family of transmembrane glycoproteins that play a key role in calcium-dependent cell-cell adhesion. Several members of the cadherin family have been identified so far, including E- (epithelial), P- (placental), N- (neuronal), and M- (muscle) cadherin. M-cadherin is expressed in myoblasts and might be involved in skeletal muscle cell differentiation.

Mab MCAD-21G4 is directed against the extracellular domain of **human** M-cadherin and can be used for Western blot, ELISA and immunocytochemistry applications.

Related Products

mab to murine M-cadherin
#0106-100/MCAD-12G4

mab to E-cadherin
#0234-100/ECAD-22F8

mab to N-cadherin
#0235-100/NCAD-7E9

For monoclonal antibodies against beta-catenin, TFF3, and LEF, please refer to our website at www.nanotools.de

Purification: The antibody was purified from serum-free cell culture supernatant by subsequent thiophilic adsorption and size exclusion chromatography.

Formulation: lyophilized from 1 ml 2 x PBS / 0.09 % Na-azide / PEG and Sucrose.

Reconstitution: Reconstitute with 1 ml H₂O (15 min, RT).

Stability: For long-term storage, freeze lyophilizate upon arrival (-20°C). Upon reconstitution, aliquote and freeze in liquid nitrogen; reconstituted antibody can be stored frozen at -80°C up to 1 year. Thaw aliquots at 37°C. Thawed aliquots may be stored at 4°C up to 3 months.

Avoid repeated freeze / thaw cycles.

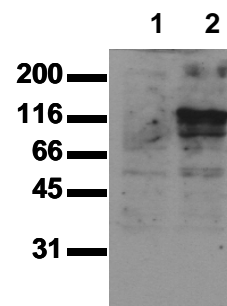
Positive Control: none

Immunoblotting: 0.5 µg/ml for HRPO/ECL detection.
Recommended blocking buffer: Casein/Tween 20 based blocking and blot incubation buffer, e.g. nanoTools product #3031-500/CPPT or #3031-3000/CPPT.

Immunoprecipitation: ND

Immunocytochemistry: 5 µg/ml (Immunofluorescence)

ELISA: use at 0.05 µg/ml



Detection of M - cadherin

Whole cell lysates were applied to SDS-PAGE and transferred to a PVDF membrane. The immunoblot was probed with mab MCAD-21G4 (0.5 µg/ ml) for 1h at RT and developed by ECL (exp. time: 30 sec).

lane 1: COS-7 ; lane 2: human M-cadherin overexpressed in COS-7 cells

All products are supplied for research and investigational use only. Not for use in humans or laboratory animals.